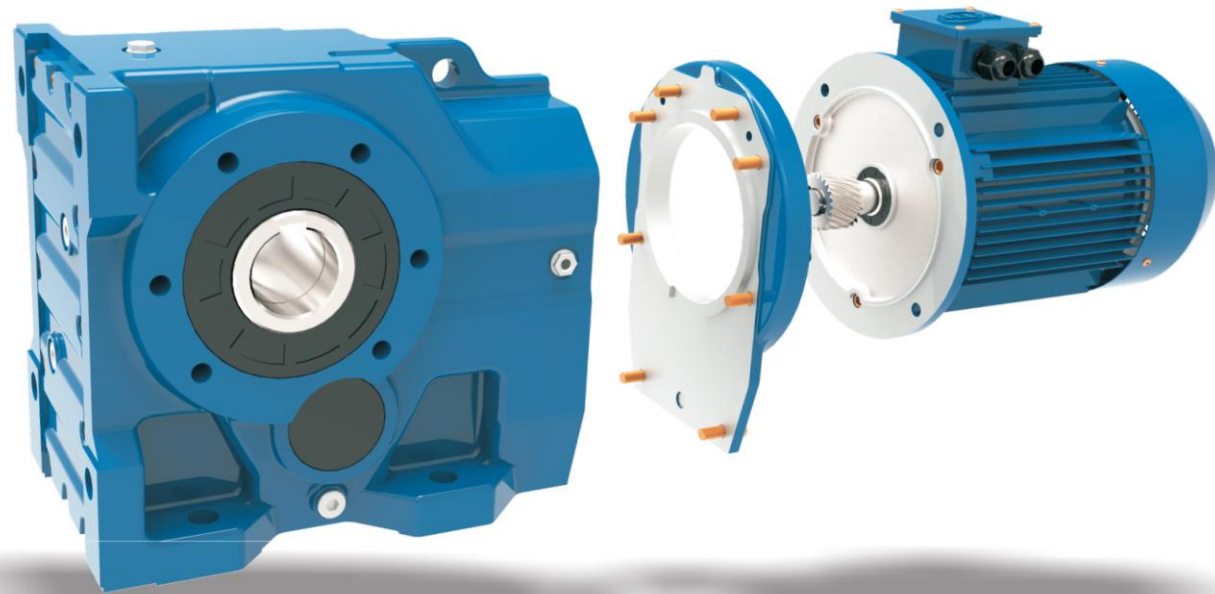


Редуктор цилиндрико-конический серии "К"

K Series Modular helical gearbox



Based on design of the traditional helical gearbox , as well as to meet strong market demand, **EDS** combines the European advanced technical experience, after three years reserch and development, K series modular gearbox access to market successfully.

Characteristics:

- 1.Saving the inventory investment and warehouse space.
- 2.High transmisson efficiency,the single machine can reach as much as 96%.
- 3.Modular design can provide various kinds of ratio combination only through the simple transformation of high speed gears.
- 4.Modularity allows distributors creat any new ratio quickly and flexibly by themselves to shorten the lead time greatly.

KAB Series



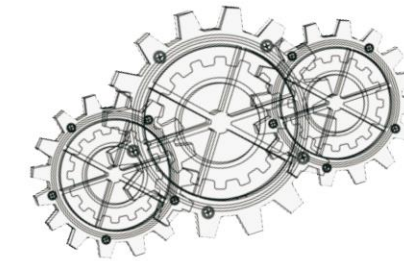
KAZ Series



KAT Series



K Series



K..S Series



KF Series



KAF Series



K..Series with input flange

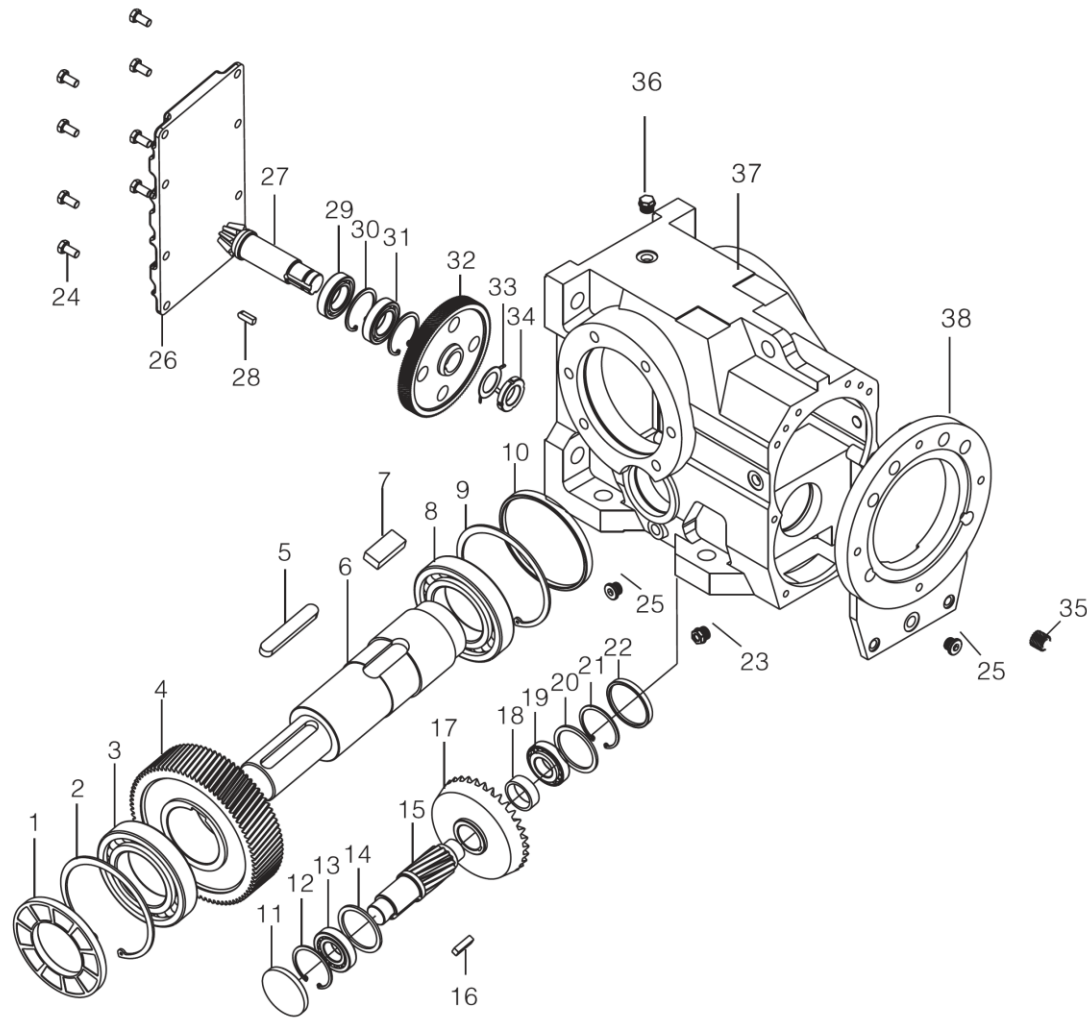


Working Environment:

- 1.Without industry limitation.
- 2.Suitable for normal-reverse rotation.
- 3.The working place should be lower than 1,000 meters above sea-level.
- 4.Please consult our technical supporting deparment for other circumstances.
- 5.Working temperature:-40°C-50°C (The lubrication should be heated until above 0°C if temperature below 0°C.)
- 6.The input speed should be less than 3,000 r/m,the circumferential speed of the gear should not exceed 20m/s.

CONTENTS:

Product disassembly graph



- | | |
|----------------------------|-----------------------------|
| 1、 Oil seal | 20、 Adjusting ring |
| 2、 Circlip for hole | 21、 Circlip for hole |
| 3、 Bearing | 22、 Seal cover |
| 4、 Third stage big gear | 23、 Oil mirror |
| 5、 Key | 24、 Screw |
| 6、 Output shaft | 25、 Plug |
| 7、 Key | 26、 Housing cover |
| 8、 Bearing | 27、 Second-stage gear shaft |
| 9、 Circlip for hole | 28、 Key |
| 10、 Seal cover | 29、 Bearing |
| 11、 Seal cover | 30、 Circlip for hole |
| 12、 Circlip for hole | 31、 Bearing |
| 13、 Bearing | 32、 First-stage big gear |
| 14、 Adjusting ring | 33、 Lock washer |
| 15、 Third-stage gear shaft | 34、 Round nut |
| 16、 Key | 35、 First-stage small gear |
| 17、 Second-stage big gear | 36、 Breather plug |
| 18、 Shaft sleeve | 37、 Housing |
| 19、 Bearing | 38、 Front cover |



CONTENTS:

KA67 Ratio match table

Motor power range(KW)	Ratio	First stage-small gear	63 type	71 type	80 type	90 type	100 type	112 type	132 type	First stage-big gear	Second Stage + Third Stage gear
0.18-0.37	144.79	X1015	Φ10							D0601015091	A+C
0.18-0.75	123.54	X1017	Φ10	Φ10	Φ12					D0601017088	
0.18-1.1	108.03	X1019	Φ10	Φ10	Φ12	Φ14				D0601019086	
0.25-1.1	102.62	X1020		Φ10	Φ12	Φ14				D0601020086	
0.37-1.1	90.04	X1022		Φ10	Φ12	Φ14				D0601022083	
0.37-1.5	76.37	X1025	E		Φ12	Φ14				X D0601025080	
0.75-1.5	68.95	X1027			Φ12	Φ14				X D0601027078	
0.75-1.5	60.66	X1224			Φ12	Φ14				D0601224061	
0.75-2.2	57.28	X1225			Φ12	Φ14	Φ16			D0601225060	
1.1-2.2	48.77	X1523				Φ14	Φ16			D0601523047	
1.1-3.0	44.32	X1721				Φ14	Φ16			D0601721039	
1.5-3.0	38.39	X1723				Φ14	Φ16			D0601723037	
1.5-4.0	35.61	X1022				Φ14	Φ16	Φ18		D0601022083	B+C
1.5-4.0	30.21	X1025				Φ14	Φ16	Φ18		D0601025080	
1.5-4.0	27.27	X1027				Φ14	Φ16	Φ18		D0601027078	
2.2-5.5	23.99	X1224					Φ16	Φ18	Φ22	Y D0601224061	
2.2-5.5	22.66	X1225	F				Φ16	Φ18	Φ22	Y D0601225060	
2.2-5.5	19.29	X1523					Φ16	Φ18	Φ22	D0601523047	
2.2-5.5	17.53	X1721					Φ16	Φ18	Φ22	D0601721039	
2.2-5.5	15.19	X1723					Φ16	Φ18	Φ22	D0601723037	
2.2-5.5	13.22	X1725					Φ16	Φ18	Φ22	D0601725035	
2.2-5.5	12.48	X1225					Φ16	Φ18	Φ22	D0601225060	B+D
2.2-5.5	10.63	X1523	G				Φ16	Φ18	Φ22	Z D0601523047	
2.2-5.5	9.66	X1721					Φ16	Φ18	Φ22	Z D0601721039	
2.2-5.5	8.37	X1723					Φ16	Φ18	Φ22	D0601723037	
2.2-5.5	7.28	X1725					Φ16	Φ18	Φ22	D0601725035	

Selection of instruction:

- The basic gearboxes = E+X+A+C or F+Y+B+C or G+Z+B+D (with extra input flange or other spare parts) ;
 E+X+A+C, collocate ratio from 38.39 to 144.79;
 F+Y+B+C, collocate ratio from 13.22 to 35.61;
 G+Z+B+D, collocate ratio from 7.28 to 12.48;
- E.g: if you need to collocate ratio 60.66, you should choice A+C, with first stage small gear E(X1224) and first stage big gear X (D0601224061);
- Diameter of first stage-small gear depends on motor size.

CONTENTS:

KA77 Ratio match table

Motor power range(KW)	Ratio	First stage-small gear	71 type	80 type	90 type	100 type	112 type	132 type	160 type	First stage-big gear	Second Stage + Third Stage gear
0.37	192.18	X1014	Φ10							D0721014112	A+C
0.37	179.36	X1015	Φ10							D0721015112	
0.37-0.75	154.02	X1017	Φ10	Φ12						D0721017109	
0.55-1.5	135.28	X1019		Φ12	Φ14					D0721019107	
0.55-1.5	128.52	X1020		Φ12	Φ14					D0721020107	
0.55-1.5	113.56	X1022		Φ12	Φ14					D0721022104	
0.55-2.2	97.05	X1025	E	Φ12	Φ14	Φ16				X D0721025101	
1.1-2.2	88.97	X1027			Φ14	Φ16				D0721027100	
1.1-3.0	78.07	X1224			Φ14	Φ16				D0721224078	
1.1-3.0	73.99	X1225			Φ14	Φ16				D0721225077	
1.5-3.0	64.76	X1523			Φ14	Φ16				D0721523062	
1.5-4.0	58.34	X1721			Φ14	Φ16	Φ18			D0721721051	
1.5-4.0	51.18	X1723			Φ14	Φ16	Φ18			D0721723049	
1.5-5.5	45.16	X1725			Φ14	Φ16	Φ18	Φ22		D0721725047	
1.5-5.5	40.04	X1727			Φ14	Φ16	Φ18	Φ22		D0721727045	
2.2-4	38.39	X1025				Φ16	Φ18			D0721025101	B+C
2.2-4.0	35.19	X1027				Φ16	Φ18			D0721027100	
2.2-7.5	30.88	X1224				Φ16	Φ18	Φ22		D0721224078	
2.2-7.5	29.26	X1225				Φ16	Φ18	Φ22		D0721225077	
2.2-7.5	25.61	X1523	F			Φ16	Φ18	Φ22		Y D0721523062	
4-7.5	23.08	X1721					Φ18	Φ22		D0721721051	
4-11	20.24	X1723					Φ18	Φ22	Φ28	D0721723049	
5.5-11	17.86	X1725						Φ22	Φ28	D0721725047	
5.5-11	15.84	X1727						Φ22	Φ28	D0721727045	
5.5-11	13.52	X2026						Φ22	Φ28	D0722026037	
5.5-11	12.33	X1721						Φ22	Φ28	D0721721051	B+D
7.5-11	10.81	X1723	G					Φ22	Φ28	Z D0721723049	
7.5-11	9.54	X1725						Φ22	Φ28	D0721725047	
7.5-11	8.46	X1727						Φ22	Φ28	D0721727045	
7.5-11	7.22	X2026						Φ22	Φ28	D0722026037	

Selection of instruction:

- The basic gearboxes = E+X+A+C or F+Y+B+C or G+Z+B+D (with extra input flange or other spare parts);
E+X+A+C, collocate ratio from 40.04 to 192.18;
F+Y+B+C, collocate ratio from 13.52 to 38.39;
G+Z+B+D, collocate ratio from 7.22 to 12.33;
- E.g: if you need to collocate ratio 58.34, you should choice A+C, with first stage small gear E(X1721) and first stage big gear X (D0721721051);
- Diameter of first stage-small gear depends on motor size.



CONTENTS:

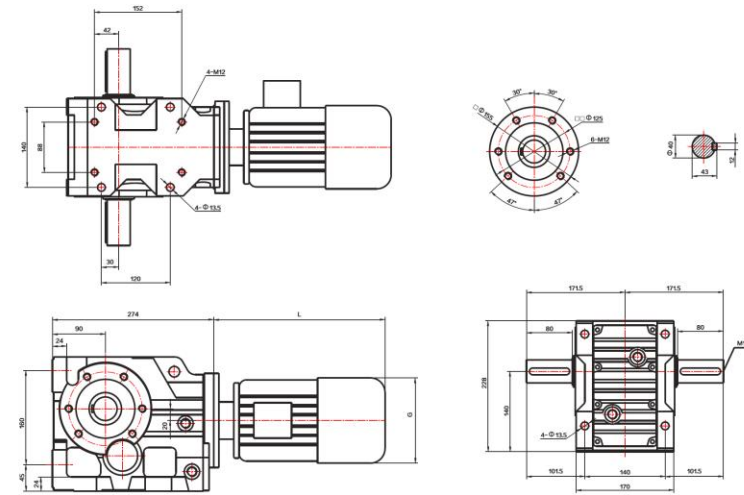
KA87 Ratio match table

Motor power range(KW)	Ratio	First stage-small gear	80 type	90 type	100 type	112 type	132 type	160 type	180 type	First stage-big gear	Second Stage + Third Stage gear	
0.75	197.37	X1017	Φ12							D0931017147	A+C	
0.75-1.5	174.19	X1019	Φ12	Φ14						D0931019145		
0.75-1.5	164.34	X1020	Φ12	Φ14						D0931020144		
0.75-2.5	147.33	X1022	Φ12	Φ14	Φ16					D0931022142		
1.1-3	126.91	X1025		Φ14	Φ16					D0931025139		
1.1-3	115.82	X1027	E	Φ14	Φ16					X D0931027137		
1.5-4	102.71	X1224		Φ14	Φ16	Φ18				X D0931224108		
1.5-4	86.34	X1523		Φ14	Φ16	Φ18				D0931523087		
2.2-5.5	79.34	X1721			Φ16	Φ18	Φ22			D0931721073		
2.2-5.5	70.46	X1723			Φ16	Φ18	Φ22			D0931723071		
2.2-5.5	63.00	X1725			Φ16	Φ18	Φ22			D0931725069		
3-7.5	56.64	X1727			Φ16	Φ18	Φ22			D0931727067		
3-7.5	49.16	X2026			Φ16	Φ18	Φ22			D0932026056		
3-7.5	44.02	X2028			Φ16	Φ18	Φ22			D0932028054		
3.0-11	36.52	X2525			Φ16	Φ18	Φ22	Φ28		D0932525040		
5.5-11	31.38	X1721				Φ22	Φ28			D0931721073	B+C	
5.5-15	27.87	X1723				Φ22	Φ28			D0931723071		
7.5-15	24.92	X1725				Φ22	Φ28			Y D0931725069		
7.5-15	22.40	X1727	F			Φ22	Φ28			Y D0931727067		
7.5-18.5	19.45	X2026				Φ22	Φ28	Φ32		D0932026056		
7.5-18.5	17.41	X2028				Φ22	Φ28	Φ32		D0932028054		
7.5-18.5	14.44	X2525				Φ22	Φ28	Φ32		D0932525040		
7.5-22	12.56	X3023				Φ22	Φ28	Φ32		D0933023032		
11.0-22	16.00	X1723					Φ28	Φ32		D0931723071		B+D
11.0-22	11.16	X2026	G				Φ28	Φ32		Z D0932026056		
11.0-22	10.00	X2028					Φ28	Φ32		Z D0932028054		
11.0-22	8.29	X2525					Φ28	Φ32		D0932525040		
11.0-22	7.21	X3023					Φ28	Φ32		D0933023032		

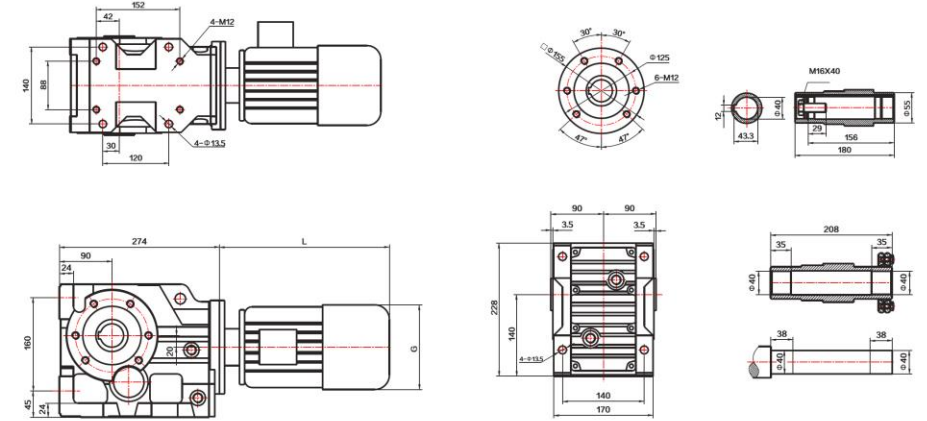
Selection of instruction:

- The basic gearboxes = E+X+A+C or F+Y+B+C or G+Z+B+D (with extra input flange or other spare parts);
E+X+A+C, collocate ratio from 36.52 to 197.37;
F+Y+B+C, collocate ratio from 12.56 to 31.38;
G+Z+B+D, collocate ratio from 7.21 to 16.00;
- E.g: if you need to collocate ratio 86.34, you should choice A+C, with first stage small gear E(X1523) and first stage big gear X (D0931523087);
- Diameter of first stage-small gear depends on motor size.





k67

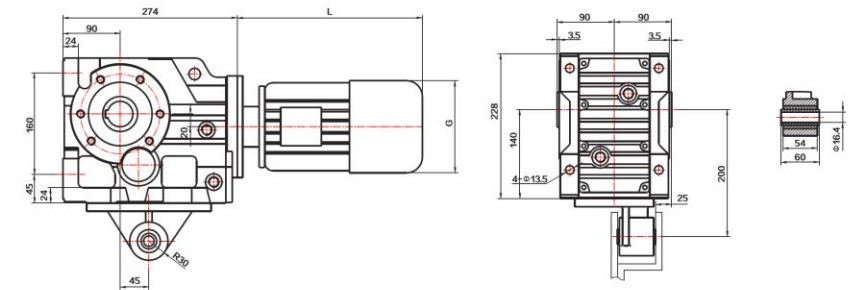
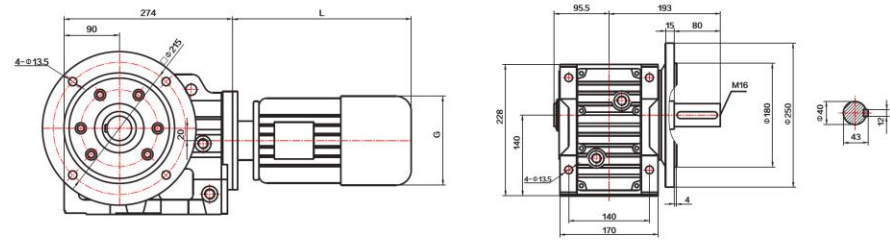


KAB67



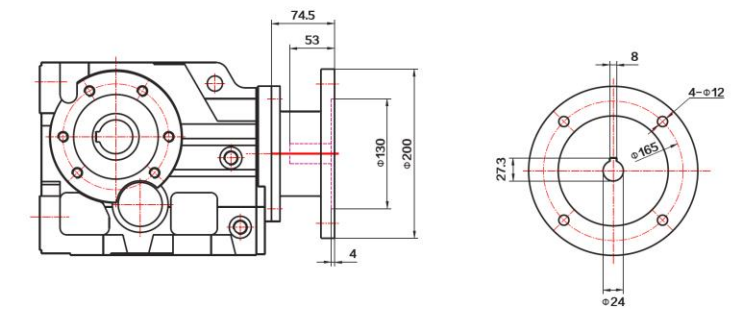
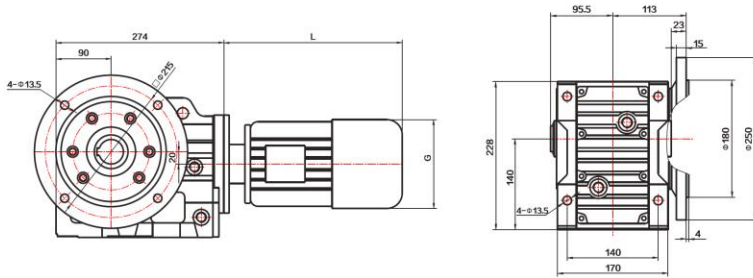
KF67

KAT67



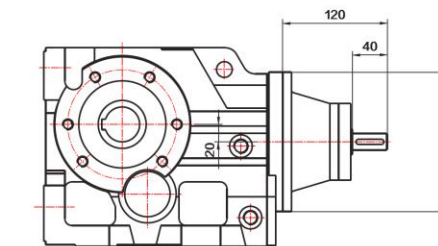
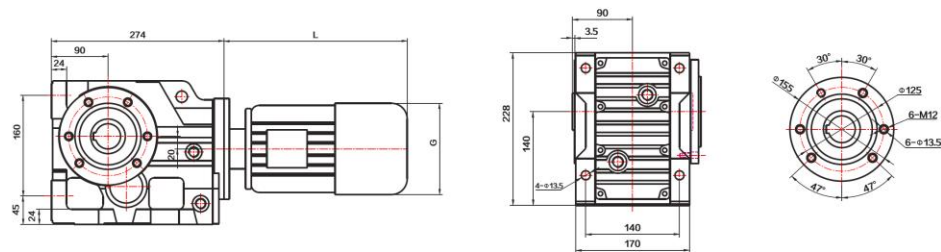
KAF67

K..67 With Input Flange

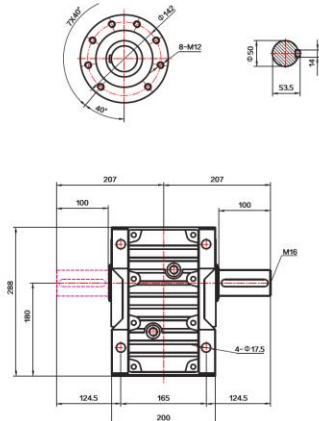
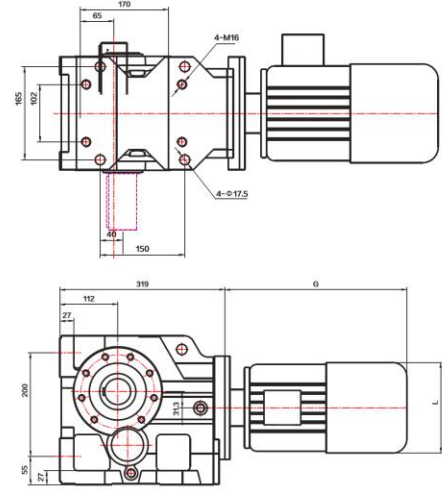


KAZ67

K..S67



CONTENTS:

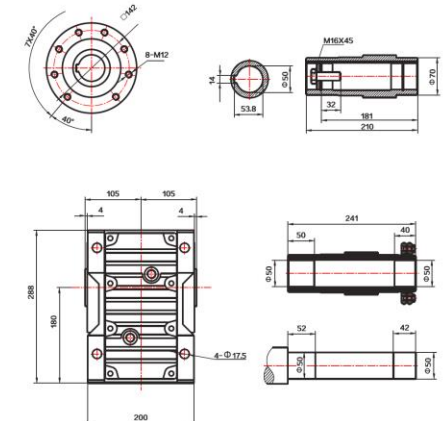
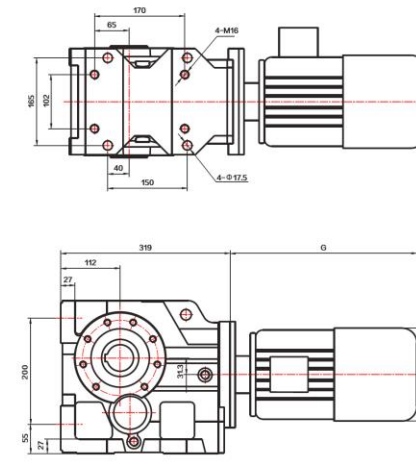


k77

CONTENTS:

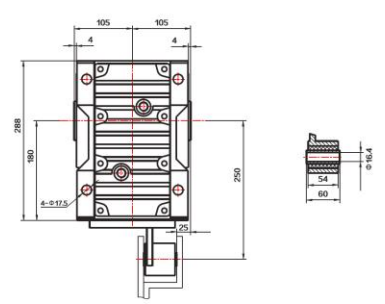
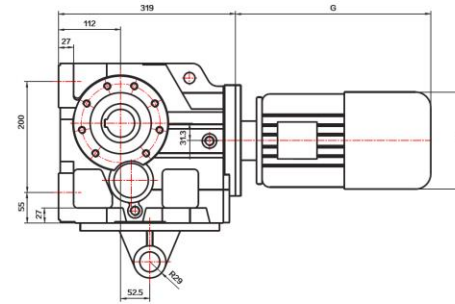
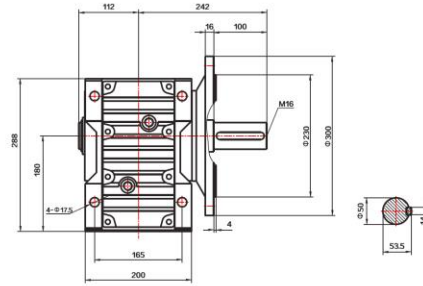
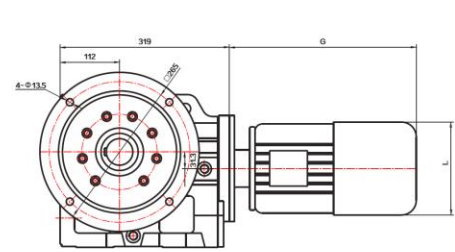


KAB77



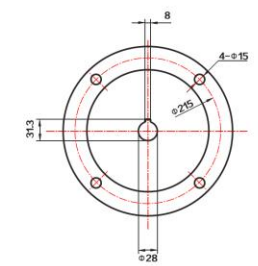
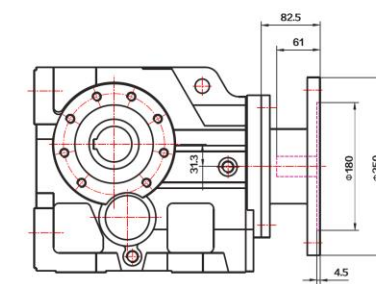
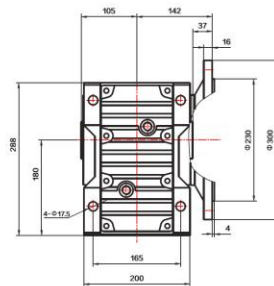
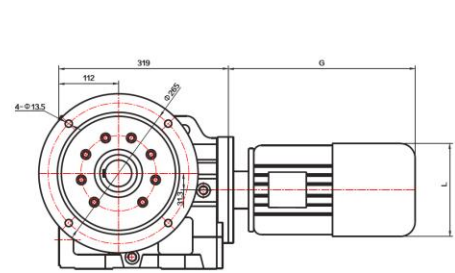
KF77

KAT77



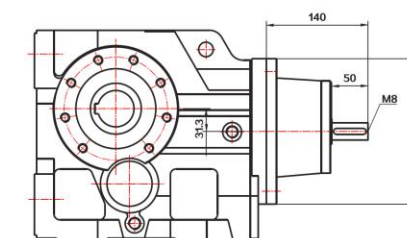
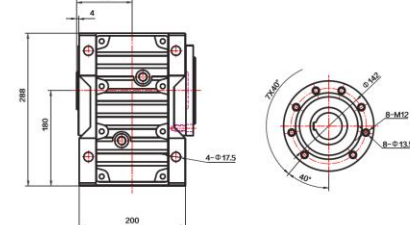
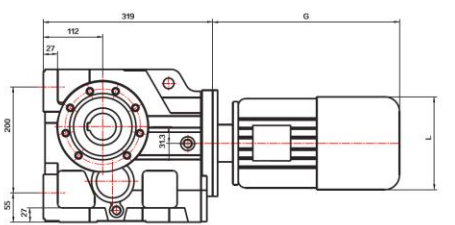
KAF77

K..77 With Input Flange

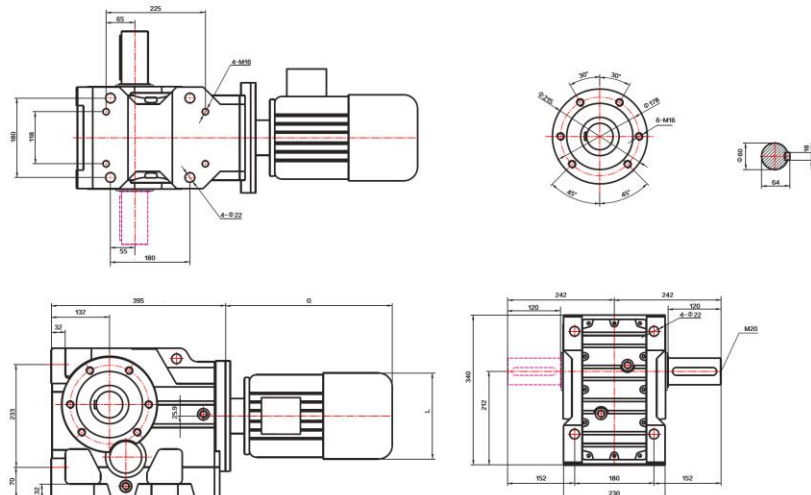


KAZ77

K..S77



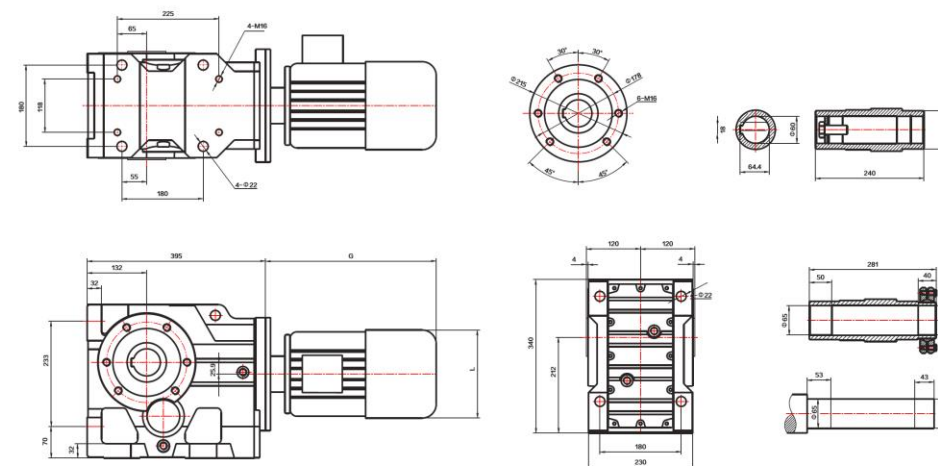
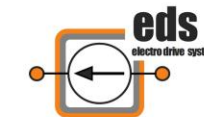
CONTENTS:



k87



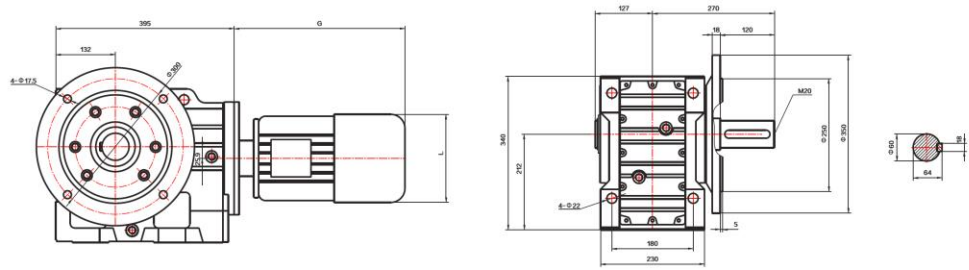
CONTENTS:



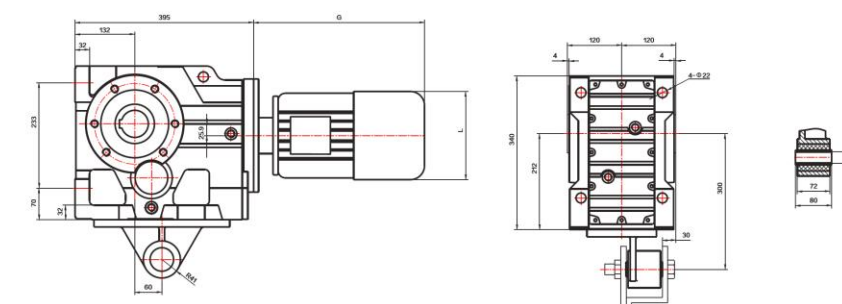
KAB87



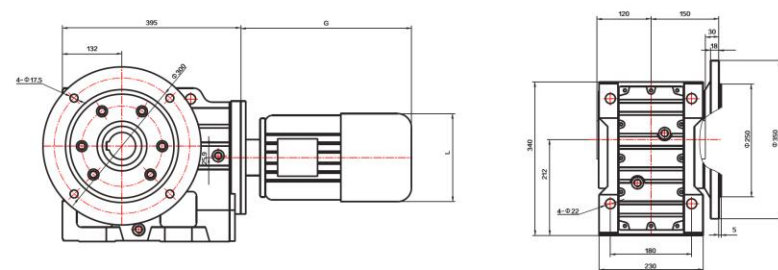
KF87



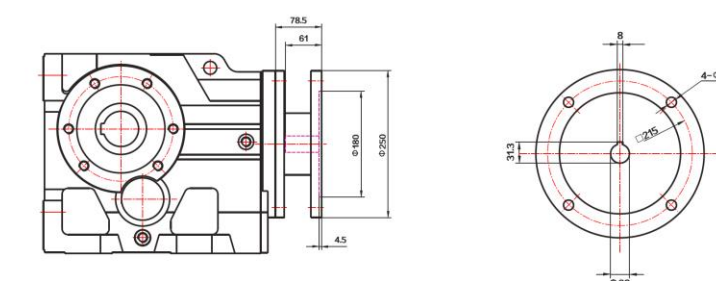
KAT87



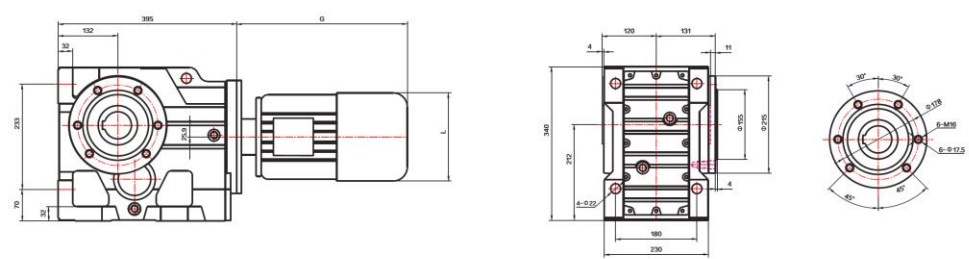
KAF87



K..87 With Input Flange



KAZ87



K..S87

