

Коническо-цилиндрический мотор-редуктор Bonfiglioli A602 – A603 – A604



A 60...M

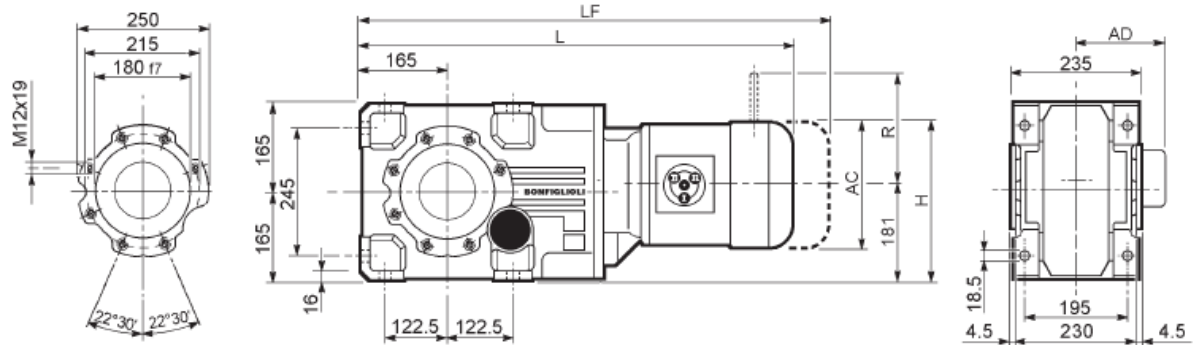


Image	S	M	AC	H	L	AD	Kg	M_FD M_FA		M_FD		M_FA	
								LF	Kg	R	AD	R	AD
	S2	M2S	156	256.5	700.5	119	98	770.5	102	129	143	134	119
	S3	M3S	195	276	743.5	142	103	839.5	111	160	155	160	142
	S3	M3L	195	276	775.5	142	111	866.5	118	160	155	160	142
	S4	M4	258	307.5	883.5	193	145	992.5	163	226	193	217	193
	S4	M4LC	258	307.5	917.5	193	153	1016.5	171	226	193	217	193
	S5	M5S	310	333.5	970	245	173	1110	203	266	245	247	245
	S5	M5L	310	333.5	1014	245	189	1154	219	266	245	247	245
	S1	M1S	138	247.5	718	108	99	781	101	103	132	124	108
	S1	M1L	138	247.5	742	108	100	803	103	103	132	124	108
	S2	M2S	156	256.5	771	119	104	841	108	129	143	134	119
	S3	M3S	195	276	814	142	109	910	117	160	155	160	142
	S3	M3L	195	276	846	142	117	937	124	160	155	160	142

A 60...HS

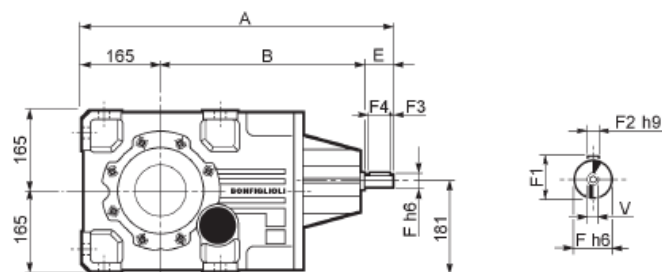
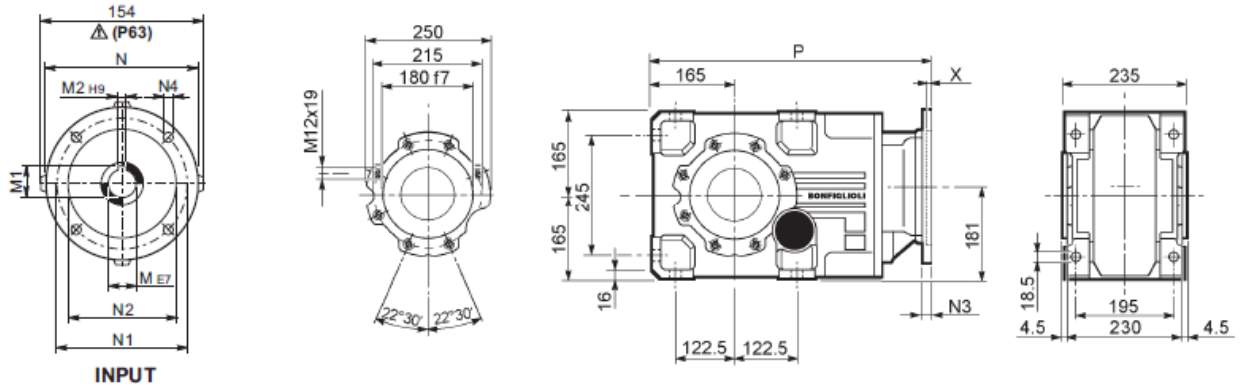
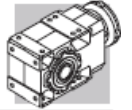


Image	HS	A	B	E	F	F1	F2	F3	F4	V	Kg
	HS	633	408	60	28	31	8	5.0	50	M10x22	106
		633	408	60	28	31	8	5.0	50	M10x22	106
		676	461	50	24	27	8	2.5	45	M8x19	112

Коническо-цилиндрический редуктор Bonfiglioli A602 – A603 – A604

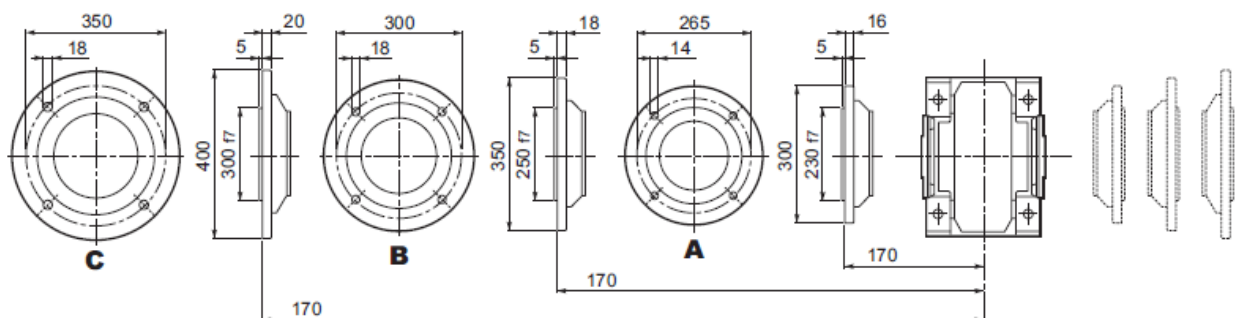
A 60...P(IEC)



		M	M1	M2	N	N1	N2	N3	N4	X	P	kg
		11	12.8	4	140	115	95	—	M8x19	4	516.5	90
		14	16.3	5	160	130	110	—	M8x16	4.5	516.5	90
		19	21.8	6	200	165	130	—	M10x12	4	536	91
		24	27.3	8	200	165	130	—	M10x12	4	536	91
		28	31.3	8	250	215	180	—	M12x16	4.5	546	95
		28	31.3	8	250	215	180	—	M12x16	4.5	546	95
		38	41.3	10	300	265	230	16	14	5	581.5	104
		42	45.3	12	350	300	250	23	18	5.5	633	121
		48	51.8	14	350	300	250	23	18	5.5	633	121
		11	12.8	4	140	115	95	—	M8x19	4	587	88
		14	16.3	5	160	130	110	—	M8x16	4.5	587	88
		19	21.8	6	200	165	130	—	M10x12	4	606.5	90
		24	27.3	8	200	165	130	—	M10x12	4	606.5	90
		28	31.3	8	250	215	180	—	M12x16	4.5	616.5	94
		28	31.3	8	250	215	180	—	M12x16	4.5	616.5	94

Конический редуктор Bonfiglioli A602 – A603 – A604. Выходной фланец.

A 60...F...

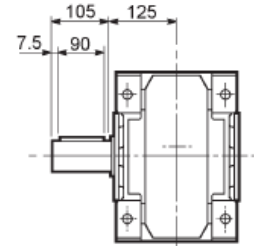
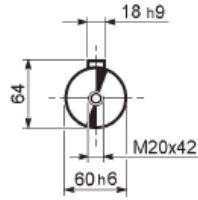


Конический редуктор Bonfiglioli A602 – A603 – A604. Выходной вал.

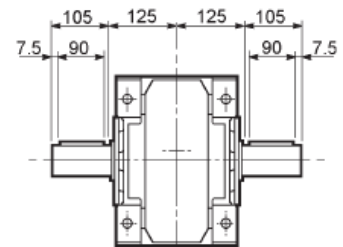
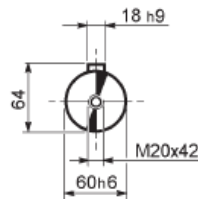
A 60



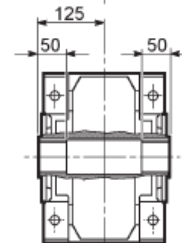
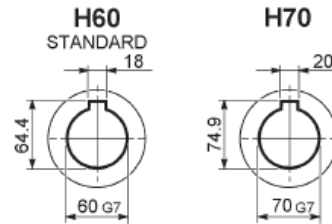
A 60...UR



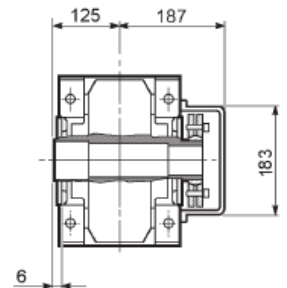
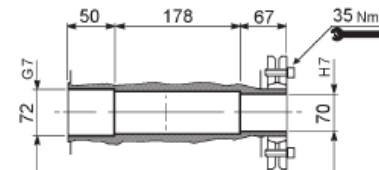
A 60...UD



A 60...UH

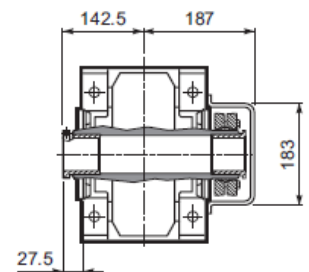
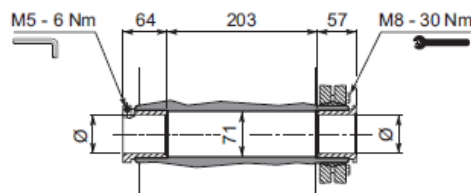


A 60...US



A 60...QF

	Ø
QF55	55
QF60	60
QF65	65
QF70	70



A 60...UV

