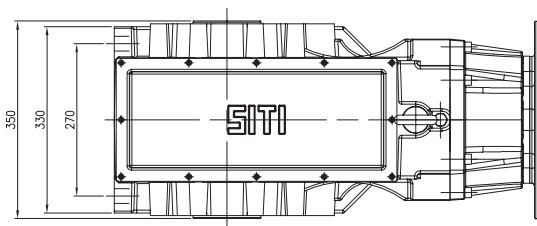
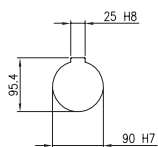
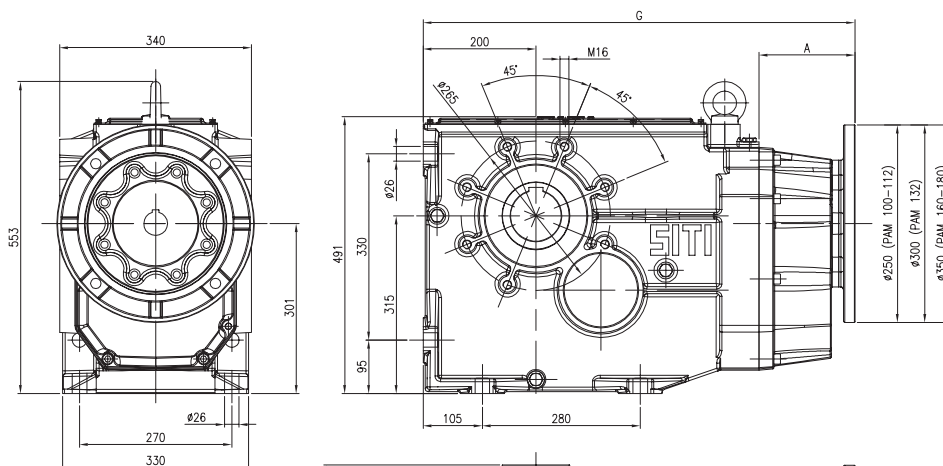
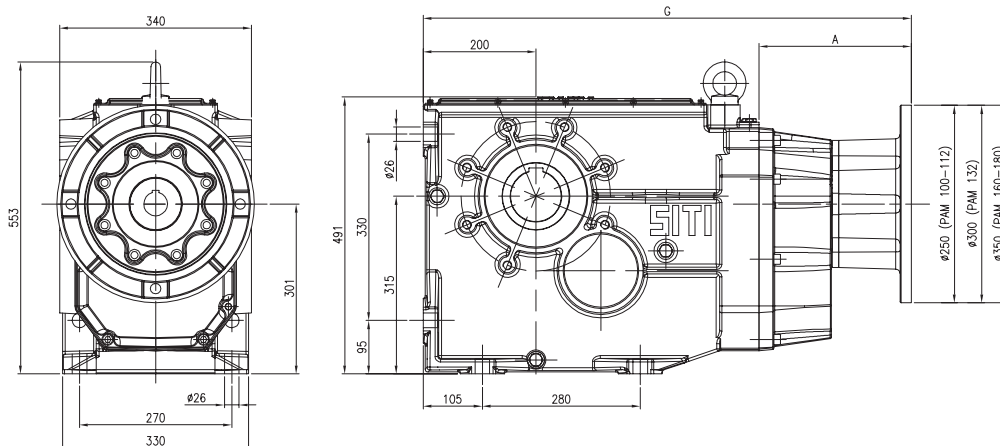


## MBH 160

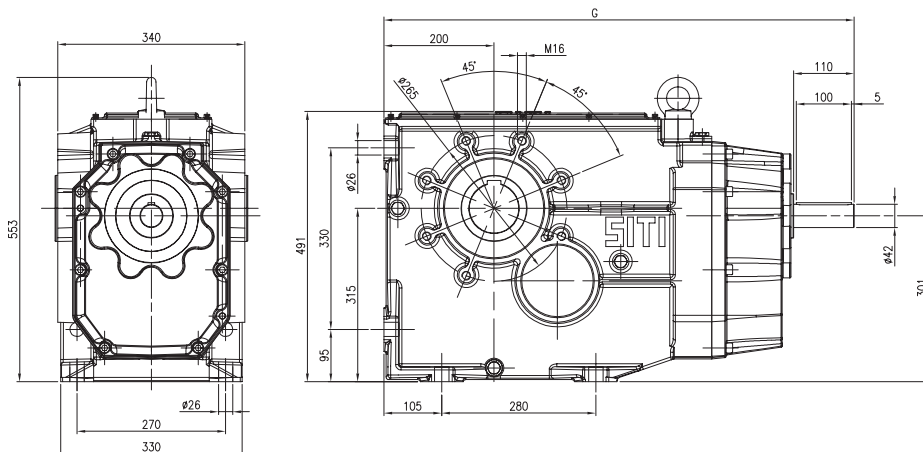


## MBHGC 160

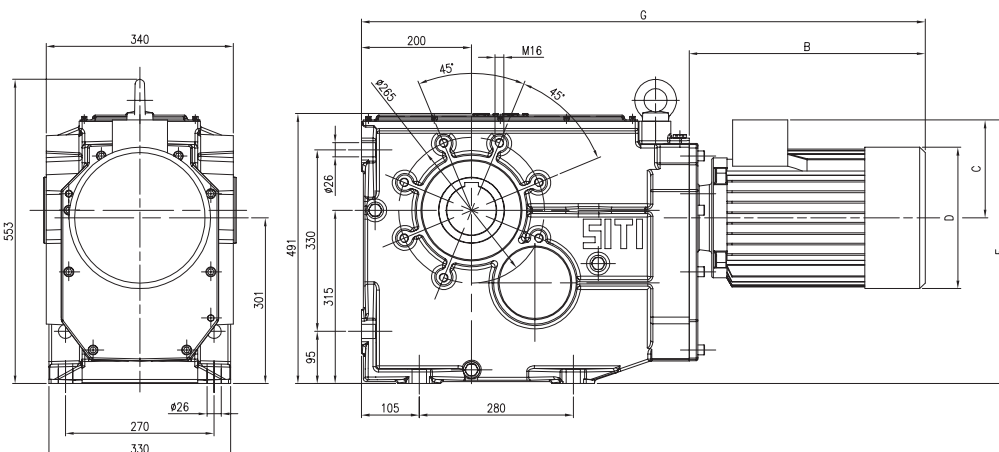


	A	B	C	D	E	F	G
<b>BH 160</b>							854,5
<b>MBH160 PAM 100</b>	170						765,5
<b>MBH160 PAM 112</b>	170						765,5
<b>MBH160 PAM 132</b>	170						765,5
<b>MBHGC160 GR.100</b>	211						806,5
<b>MBHGC160 GR.112</b>	211						806,5
<b>MBHGC160 GR.132</b>	211						806,5
<b>MBHGC160 GR.160</b>	270						865,5
<b>MBHGC160 GR.180</b>	270						865,5
<b>MBHC160 GR.100</b>		316	138	192	439	85	911,5
<b>MBHC160 GR.112</b>		340	150	216	451	100	935,5
<b>MBHC160 GR.132S</b>		391	178	257	479	100	986,5
<b>MBHC160 GR.132M</b>		429	178	257	479	100	1024,5

## BH 160



## MBHC 160



PAM DISPONIBILI

PAM VERSIONS AVAILABLE

VERFÜGBARE "PAM" AUSFÜHRUNGEN

i	MBH			MBHGC				MBHC			
	100	112	132	100	112	132	160	180	112	132S	132M
7,56											
9,24											
10,80											
12,35											
15,10											
17,65											
19,66											
23,26											
26,19											
31,67											
36,65											
42,19											
49,70											
54,90											
63,00											
73,73											
86,14											
103,50											
127,80											
144,00											
165,60											
186,00											

I motori grandezza 200 e 225 possono essere montati solo in tipologia B3, con giunto senza campana.

Motor size 200 and 225 can be mounted only in B3 type, with coupling but without bell-housing.

Die Motoren in Baugroesse 200 und 225 koennen nur in Bauform B3 eingebaut werden; mit Kupplung aber ohne Glocke.